

HARRIS COUNTY FELONY PRETRIAL DETENTION REPORT

Brought to you by the Texas Criminal Justice Coalition and researchers at Harvard University

March 14, 2021 - March 20, 2021



Lori Chambers Gray – 262nd District Court

Among current pretrial jail inmates assigned to Judge Chambers Gray:

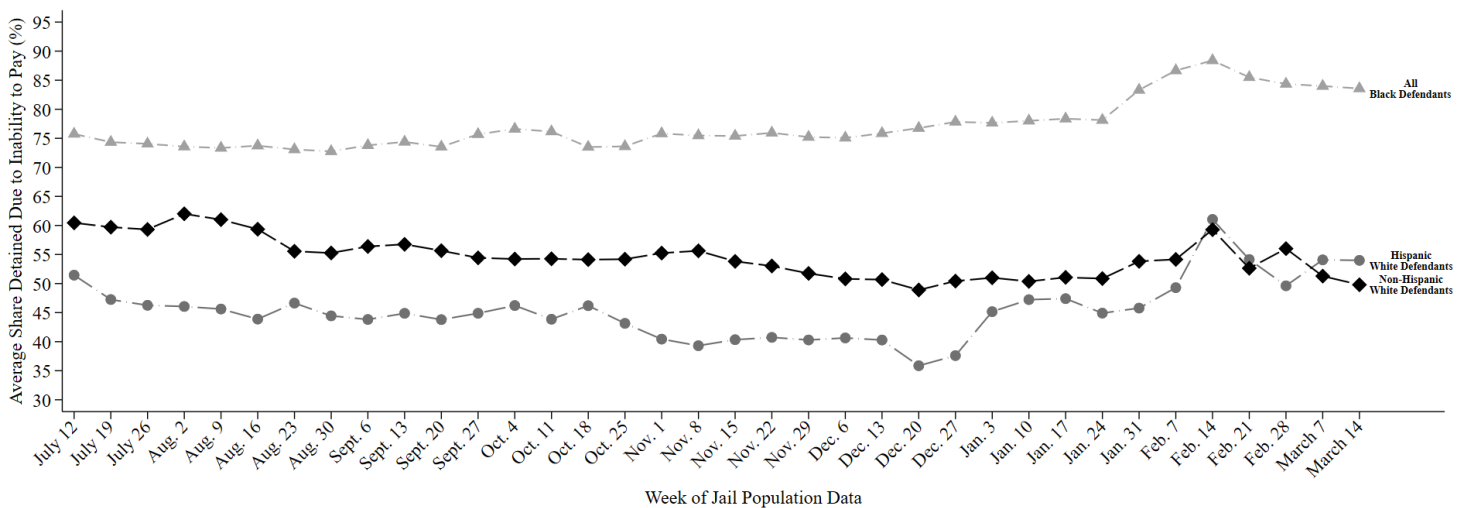
- **84% of Black defendants (149 out of 178)**
- **54% of Hispanic White defendants (36 out of 66)**
- **50% of non-Hispanic White defendants (54 out of 109)**

were detained per night based on inability to pay

Last week, among current pretrial jail inmates assigned to **Judge Chambers Gray**, **84% of Black defendants (149 out of 178 on an average night)**, **54% of Hispanic White defendants (36 out of 66 on an average night)**, and **50% of non-Hispanic White defendants (54 out of 109 on an average night)** were detained in Harris County Jail because they couldn't afford money bail.

Judge Chambers Gray's **racial difference in the share detained due to inability to pay for Black and Non-Hispanic White defendants** is among the **25% worst** in Harris County. Her **racial difference in the share detained due to inability to pay for Hispanic and Non-Hispanic White defendants** is among the **50% best** in Harris County.

Track Judge Chambers Gray's Share Detained Due to Inability to Pay



This report uses jail population data provided by Harris County. Share detained due to inability to pay represents the percent of current pretrial jail inmates assigned to this judge who were detained because they couldn't afford money bail.