

HARRIS COUNTY FELONY PRETRIAL DETENTION REPORT

Brought to you by the Texas Center for Justice and Equity and researchers at Harvard University

October 31, 2021 - November 06, 2021



Amy Martin – 263rd District Court

Among current pretrial jail inmates assigned to Judge Martin:

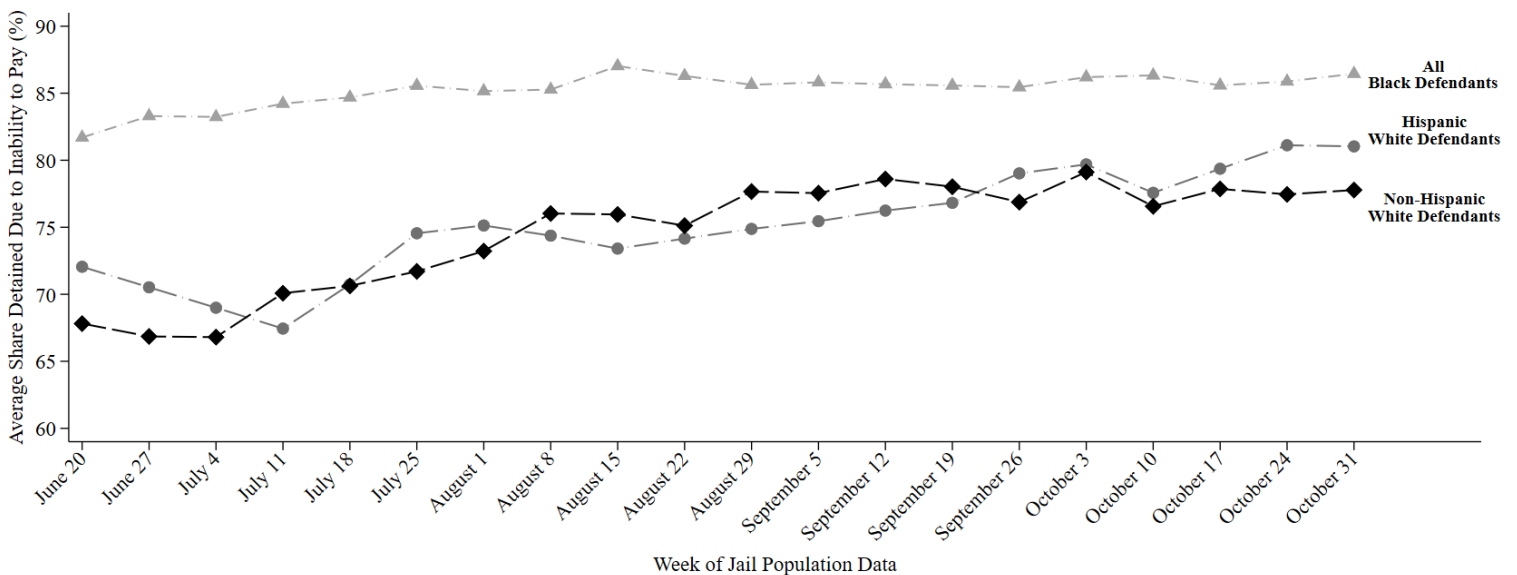
- **86% of Black defendants (134 out of 156)**
- **81% of Hispanic White defendants (46 out of 56)**
- **77% of non-Hispanic White defendants (54 out of 70)**

were detained per night based on inability to pay

Last week, among current pretrial jail inmates assigned to Judge Martin, **86% of Black defendants (134 out of 156 on an average night)**, **81% of Hispanic White defendants (46 out of 56 on an average night)**, and **77% of non-Hispanic White defendants (54 out of 70 on an average night)** were detained in Harris County Jail because they couldn't afford money bail.

Judge Martin's **racial difference in the share detained due to inability to pay for Black and Non-Hispanic White defendants** is among the **25% best** in Harris County. Her **racial difference in the share detained due to inability to pay for Hispanic and Non-Hispanic White defendants** is among the **50% best** in Harris County.

Track Judge Martin's Share Detained Due to Inability to Pay



This report uses jail population data provided by Harris County. Share detained due to inability to pay represents the percent of current pretrial jail inmates assigned to this judge who were detained because they couldn't afford money bail.